

TRANSPORTATION

A. Transpole Network in Lille

B. SNCF



A. Transpole Network in Lille

Lille is a human-sized city and you can do almost everything by just walking.


You can also be quicker by using our TRANSPOLE transportation network through buses, metro (underground), tramway and bike.

Closest metro stations from IESEG:

- Line 1: "République – Beaux-Arts" and « Gambetta »
- Line 2: « Cormontaigne » and « Port de Lille »

Closest bus stop from IESEG:

- Line 12 (either direction of the line) : "Solférino"

 = IESEG



More details on Transpole website (metro, tramway, bus lines and bike / schedules / tariffs / journey planner, etc.):

<http://www.transpole.fr/> (available in English ☺)



1. PASS PASS SYSTEM

Pass Pass system (electronic transportation pass) is in place since June 2013, and still experiences some technical problems from time to time. It is used for all transportation system in Lille: buses, metro (underground), tramway and bike (V'lille). It can also be used for regional trains.

1. You need to get the PASS PASS CARD first,
2. and then apply for a specific type of subscription, depending on your age and length of your stay.

2. PASS PASS CARD

Pass Pass Card is available in 3 different versions, depending on your travel habits.

Carte personnelle (personal card) (which we recommend to take)

- For all and to do everything!
- Upload on ONE and ONLY card: all your Transpole subscriptions (Adagio, Viva, Rythmo...) + all your occasional Transpole tickets (Single-Trip Ticket, Day Pass,...) + V'lille and TER subscriptions.

Example: I can upload one Viva subscription + one V'lille subscription + 3 ZAP rides + 1 Single-Trip Ticket.

Carte non-personnalisée (non-personalized card)

- Occasional travellers
- Upload unlimited number of occasional Transpole ticket
- Possibility to lend the card

Example: I can upload 3 Single-Trip Tickets, 2 ZAP rides, 1 Pass'Journée (Day Pass) and 1 Pass'Soirée (Evening Pass) on ONE and ONLY card

Tickets rechargeables (reloadable tickets)

- Very occasional travellers
- Upload limited to one category of transportation ticket per reloadable ticket
- Possibility to lend the card

Example: I buy 5 ZAP rides on one ticket. Once I have used them, I can reload the ticket with an unlimited number of ZAP rides. If I wish to buy a different category of transportation tickets (ex: single-trip ticket), I have to buy another reloadable ticket.



3. HOW TO GET A PASS PASS CARD

How to get a PASS PASS card? You'll have to give:

- Completed PASS PASS application form
- a recent identity picture to stick on the form
- 4 Euros (cash)

Give all elements to TRANSPOLE Sales Information Offices located on the underground level of the Lille-Flandres train station. They should edit your card within a few minutes.



Once you have your PASS PASS card (and only after), you can buy the tickets / apply for subscriptions which match the card, from Transpole Sales Information Offices ("*Espaces Information Vente*") and from vending machines in metro stations.

Sales Information Office Lille-Flandres opening hours:
Monday to Friday: 7:00 till 19:00 / Saturday: 08:00 till 17:00



4. Which travel subscription choose with your PASS PASS card?

If you are **LESS THAN 26 years old** and live in Lille metropolis:

- And you stay for **1 semester**:
 - **VIVA** subscription: reduced fare on 10-tickets booklet (single trip), weekly or monthly season ticket
- And your stay for **2 semesters or more**:
 - **MAXI VIVA** subscription: 7 or 10 months minimum, or permanent

VIVA 10-tickets booklet (single trip)	10€ (-20%)	Single trip with no interruption with possibility of connection
VIVA weekly season ticket	7.40€	Unlimited travel 7 days in a row (does not have to be a Monday)
VIVA monthly season ticket	28€	Unlimited travel for a month (does not have to be the 1 st day of month)
MAXI VIVA permanent	22,50€/month	Unlimited. Monthly titles are charged directly on your card for a minimum of 12 months, then tacit renewal Automatic debit from your French bank account by Transpole each month.
MAXI VIVA 10 months	238€ (1+ 1/2 months gratuity)	Unlimited from September 1 st to June 30 th . Subscription from July 1 st to September 30 Automatic debit from your French bank account by Transpole each month.
MAXI VIVA 7 months	182€ (1/2 mois gratuity)	Unlimited from November 1 st to May 31 st . Subscription from July 1 st to November 30 Automatic debit from your French bank account by Transpole each month.

If you are **ABOVE 26 years old** and live in Lille metropolis:

- And you stay for **1 semester**:
 - **RYTHMO** subscription: weekly or monthly season ticket
- And your stay for **2 semesters or more**:
 - **MAXI RYTHMO** subscription: 12 months minimum

Rythmo weekly season ticket	14€	Unlimited travel 7 days in a row (does not have to be a Monday)
Rythmo monthly season ticket	52€	Unlimited travel for a month (does not have to be the 1 st day of month)
Maxi Rythmo 12 months	45,50€ /month	Unlimited. Monthly titles are charged directly on your card for a minimum of 12 months, then tacit renewal Automatic debit from your French bank account by Transpole each month.

Apply for a subscription:

	appropriate subscription application form	stick a recent identity picture on it	copy of passport or identity card	proof of address (less than 3 months old)	RIB (French bank account details)
Viva	XX	XX	XX	XX	
Maxi Viva	XX	XX	XX	XX	XX
Maxi Rythmo	XX	XX	XX	XX	XX

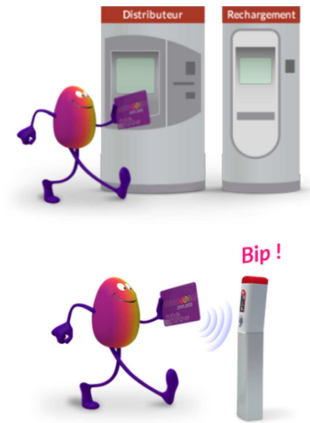
Give all elements to TRANSPOLE Sales Information Offices located on the underground level of the Lille-Flandres train station They will upload the subscription on your card within a few minutes.

Exception: RYTHMO, which you can directly upload from the vending machines. No application required (or available).

Vending machines offer explanations in English, Dutch, German, Spanish and French. Possible to pay with banknotes (do not use 20€ banknote for 1.5€ ticket, as you'll get only small coins back)

Once you have your PASS PASS Card and subscribed the appropriate subscription:

- You don't have to reload your card if you have MAXI VIVA or MAXI RYTHMO
- You have to reload your PASS PASS card regularly with appropriate tickets / coupons which match the subscription from vending machines in metro stations



5. OCCASIONAL TICKETS

Zap Ride Ticket = 0.80€

Allows you to travel on the underground or tram, without transfers, for a **maximum of 3 stations** (excluding your point of origin). Will be available in buses in a few months.

Single-Trip Ticket = 1.50€

The ticket entitles you to a one-way trip on the bus-underground-tram-coach network. You may transfer, so long as you do not interrupt your trip. Round trips are not allowed on a single-trip ticket. ONLY ticket that you will still be able to buy from bus driver.



10-Ticket Booklet = 12,50€

Booklet of 10 Single-Trip Tickets. Same conditions as above. Buy the booklet, not 10 single-trip tickets, or it will cost 15€ instead of 12.50€

Pass' Journée (Day Pass) - 4€

Unlimited travel on the bus-underground-tram-coach network for 24h as from the 1st validation

Pass' 2 Jours (2 Days Pass) - 7,50€

Unlimited travel on the bus-underground-tram-coach network for 48h as from the 1st validation

Nouveau : Pass' 3 Jours (3 Days Pass) - 9,50€

Unlimited travel on the bus-underground-tram-coach network for 72h as from the 1st validation

Pass' Soirée (Evening Pass) - 2€

Unlimited travel as from 19:00 till the end of service. Also available on "bus night line"

Pass' Grand Stade - 2,20€

Unlimited travel 2h before the event till the end of service, on presentation of the event ticket (football game, concert), outside "bus night line"

Pass' Braderie - 5€ : Available Saturday and Sunday of the Lille braderie



Travel in order



Date-stamp your ticket in the bus or on the metro/tramway platform.
Keep it until you leave the stations, as it may be checked in a vehicle or within a station.



Website to ease your travels: <http://www.transpole.mobi/>
Transpole Iphone application: <https://itunes.apple.com/fr/app/transpole/id429143032?mt=8>



V'Lille was launched in September 2011. In 2014 there should be a total of 10000 bikes available:

- 2100 VLS in the towns of Lille, la Madeleine and Mons en Baroeul (Lille metropolis)
- 8000 VLD

Mode d'emploi V'Lille:

https://www.youtube.com/watch?feature=player_embedded&v=TzQRHT2r3Z0



“bornes V'Lille” offer explanations in English, Dutch, German, Spanish and French.

What is the difference between VLS and VLD?

The **VLS (Vélo Libre Service)**,

is a self-service rent type. It is the opportunity to go all over town for short routes: daily, for your leisure activities or purchases in city center. This service is available 7/7, 24/24! Bikes are to be removed and to be restored in one of the V' Lille stations of your choice!

Once you have subscribed to the service, you have 30 minutes free each time you take a bike, then it costs 1€ per half-hour. The subscription is necessary to use the bike. You just need 2 minutes to do it from a “borne V'Lille” (self-service kiosk) at a V'Lille station with your credit card. You will then have an access number for the next times you rent a bike (sent on your cellphone). You can also subscribe from V'Lille website.

The security deposit is 200€, this sum will be taken from your account only in case of damage, loss, theft or non-return of the bike within 24h (for a 24h rent).

Video on use: <http://www.vlille.fr/fr/vlsconseil.aspx>

Subscription	Tariff
24h	1.40€
7 days	7€
1 year	36€

The VLD (Vélo Longue Durée),

is a long-term service rent type, which allows to benefit from a personal bike during the duration of your choice: 1 month, 9 and 12 months. This service is ideal for your daily routes (place of residence work, faculty) and for your strolls in family or between friends. The subscription includes: 1. The availability of a bike, 2. The equipment and the maintenance of the bike (if you subscribe to additional options), 3. The car park.

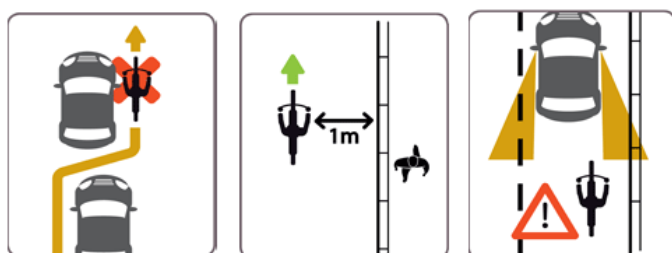
Subscription	Tariff
1 month	5€
9 months	27€
12 months	36€

You can subscribe a guarantee for 1€/month, which will reduce the amount of the security deposit from 25% (150€ instead of 200€). This sum will be taken from your account only in case of damage, loss, theft or non-return of the bike. You will be required to prove your student status when renting the VLD (proving you're a student in Lille).

New: you can now also rent 200 VLD electrical bikes and VLD folding bicycle (both options are more expensive than with regular bike) (<http://www.ville.fr/fr/vld/tarifs-vld.aspx>)

Drive safe

Know how to be a the right place



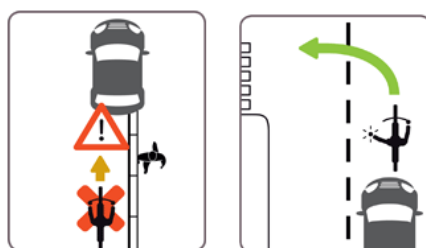
Do not zigzag between cars. Rather cycle on bicycle paths.

Stay 1m away from the side of the road.

In curves (bends), avoid blind spots (dead angles) by keeping max. to the right.



Know how to anticipate



Do not skim the pavement and parked cars. Keep your distances and keep an eye on cars.

Largely show you intention to turn by stretching your arm (especially when turning left).

Know how to be seen

Do not neglect lighting. By night, wear clear clothes and do not forget the reflective jacket.



Good to know

- Unless otherwise informed, cycling in pedestrian zone is allowed. In case of bad weather, be more vigilant.
- If you park outside a V'Lille station, make sure you lock your bicycle carefully to avoid thefts. A lock is provided in the bike's cart (you receive a 4 digits code when you retrieve the bike from the station)
- Stations are about 300 meters from each other. If no place is left at the station when you want to replace the bike, you can check free places in other stations from the "borne V'Lille", or cellphone www.ville.mobi
- When you replace a bike, wait 5 seconds till the light is green and you hear a bip. Otherwise anyone could take the bike after you and your time clock will not stop and you'll continue to pay.
- More details available on V'Lille website: <http://www.ville.fr/> (in French only)

B. SNCF

CARTE 12-27

SNCF, (Société Nationale des Chemins de Fer) manages the French rail network. **TGV (High-speed trains)** leave Lille daily for 60 towns. You should book your ticket well in advance to avoid any too expensive ticket, especially with TGV (till 3 months in advance).

Lille-Paris: 1 hour
Lille-London: 1h45

Lille-Brussels: 38 minutes
Lille-Köln: 3h

Cheaper trains are **TER**, which are slower and more appropriate for small journeys in the region, as it accesses a lot of little towns, as well as the seashore.

Lille-Brussels: 1h40
Lille-Valenciennes: between 33 minutes and 1 hour

Lille-Dieppe: 3h40
Lille-Reims: 3h14

The **12-27 card** allows young people aged between 12 and 27 to benefit (in France) from 25% reduced priced on all trains, till 60% reduced priced on TGV and Intercités if you have booked your tickets weeks/months ahead or 50% on TER and some Intercités. It may work on international travels. This card is available 1 year, it costs 50 Euros.

You can buy it on: <http://www.sncf.com/fr/tarifs-reduits/carte-jeune> . **You can buy it after you've turned 27**, but it will only be valid till you turn 28 (even if you bought the card 6 months before you turn 28).

Do not forget to punch your ticket before going into the train. Ticket punching machines are in front on train lines. You can use the following website, <http://www.voyages-sncf.com> , to check train timetables, tariffs and book / buy online.

INTER RAIL

You'll find here everything you have always wanted to know about INTER RAIL, the pass to travel in Europe by train. The website is in English which makes it easier to keep all information, relevant to your country of residence, up to date:

<http://www.interrailnet.com/>

IDBUS

<http://www.idbus.com/> offers explanations in English, Spanish and French.

Long-distance coach service that links the major European cities, operated by SNCF, more comfortable than Eurolines, Wi-Fi connection, etc.

Departures from Lille to: Amsterdam, Brussels, London and Paris Bercy

WEBSITES TO TRAVEL MORE

www.opodo.fr to travel at low cost

www.lastminute.com to travel at low cost

www.eurolines.fr to travel in Europe by bus

www.sante.gouv.fr to know which vaccine is needed for which country

www.easyjet.com ; www.ryanair.com/fr ; <http://www.vueling.com> ; <http://www.routard.com/>

WEBSITE FOR CITY MAPS AND TRAVEL ITINERARIES

www.mappy.fr

www.viamichelin.com

